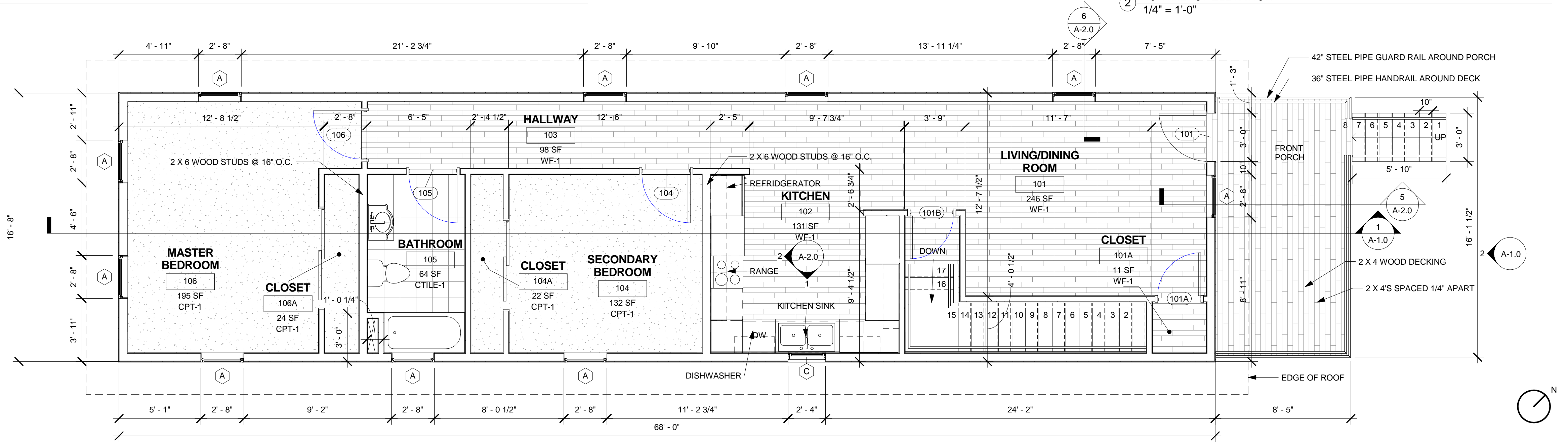


1 NORTHEAST/SOUTHWEST SECTION
1/4" = 1'-0"

2 NORTHEAST ELEVATION
1/4" = 1'-0"

FIRST FLOOR PLAN NOTES

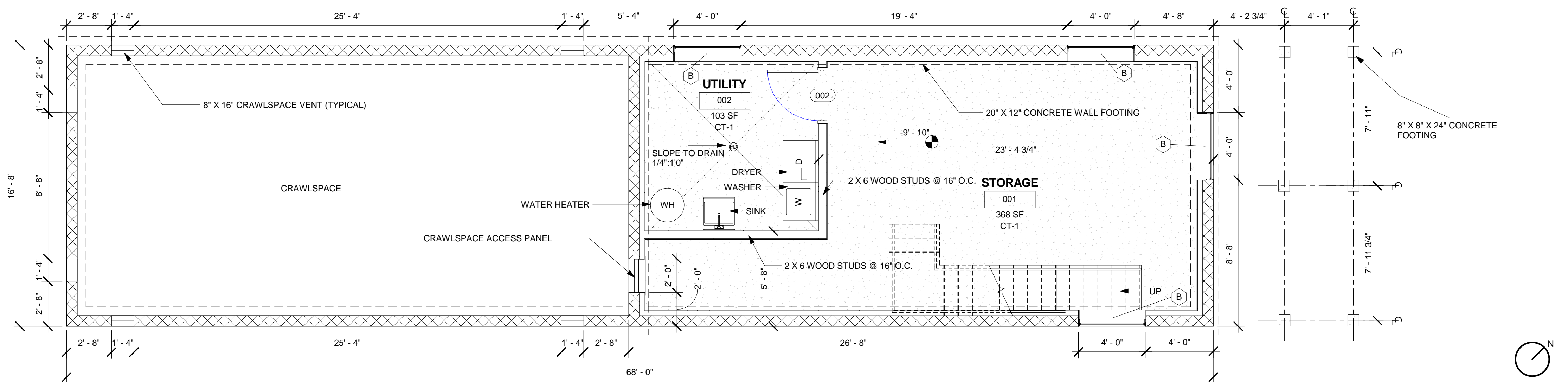
1. ALL EXTERIOR WALLS ARE 2 X 6 STUDS @ 16" O.C.
2. ALL INTERIOR WALLS ARE 2 X 4 STUDS @ 16" O.C. UNLESS OTHERWISE NOTED.
3. ALL DIMENSIONS OF EXTERIOR WALLS ARE TAKEN TO FACE OF SHEATHING.
4. ALL DIMENSIONS OF INTERIOR WALLS ARE TAKEN TO FACE OF STUD.
5. ALL EXTERIOR WINDOW AND DOOR DIMENSIONS ARE OF ROUGH OPENINGS.



3 FIRST FLOOR PLAN
1/4" = 1'-0"

BASEMENT FLOOR PLAN NOTES

1. ALL BASEMENT AND CRAWLSPACE EXTERIOR AND DEMISING WALLS ARE 8 X 8 X 16 CMU.
2. ALL INTERIOR WALLS ARE 2 X 4 STUDS @ 16" O.C. UNLESS OTHERWISE NOTED.
3. ALL DIMENSIONS ARE TAKEN TO FACE OF CMU OR FACE OF STUD UNLESS OTHERWISE NOTED.
4. DAMPROOFING REQUIRED ON ALL BASEMENT WALLS.
5. ALL SOIL TO BE CHEMICALLY TREATED FOR TERMITES.
6. ALL WINDOW AND CENT DIMENSIONS ARE ROUGH OPENINGS.

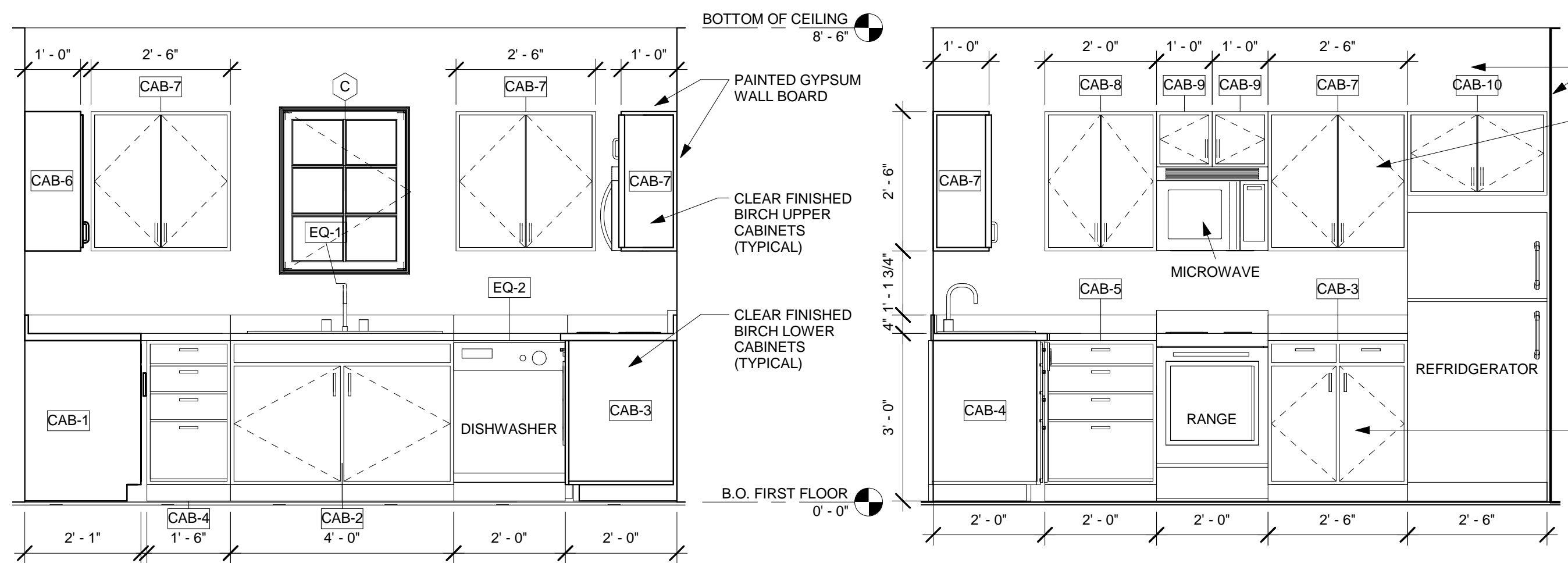


4 BASEMENT FLOOR PLAN
1/4" = 1'-0"

SHEET INDEX

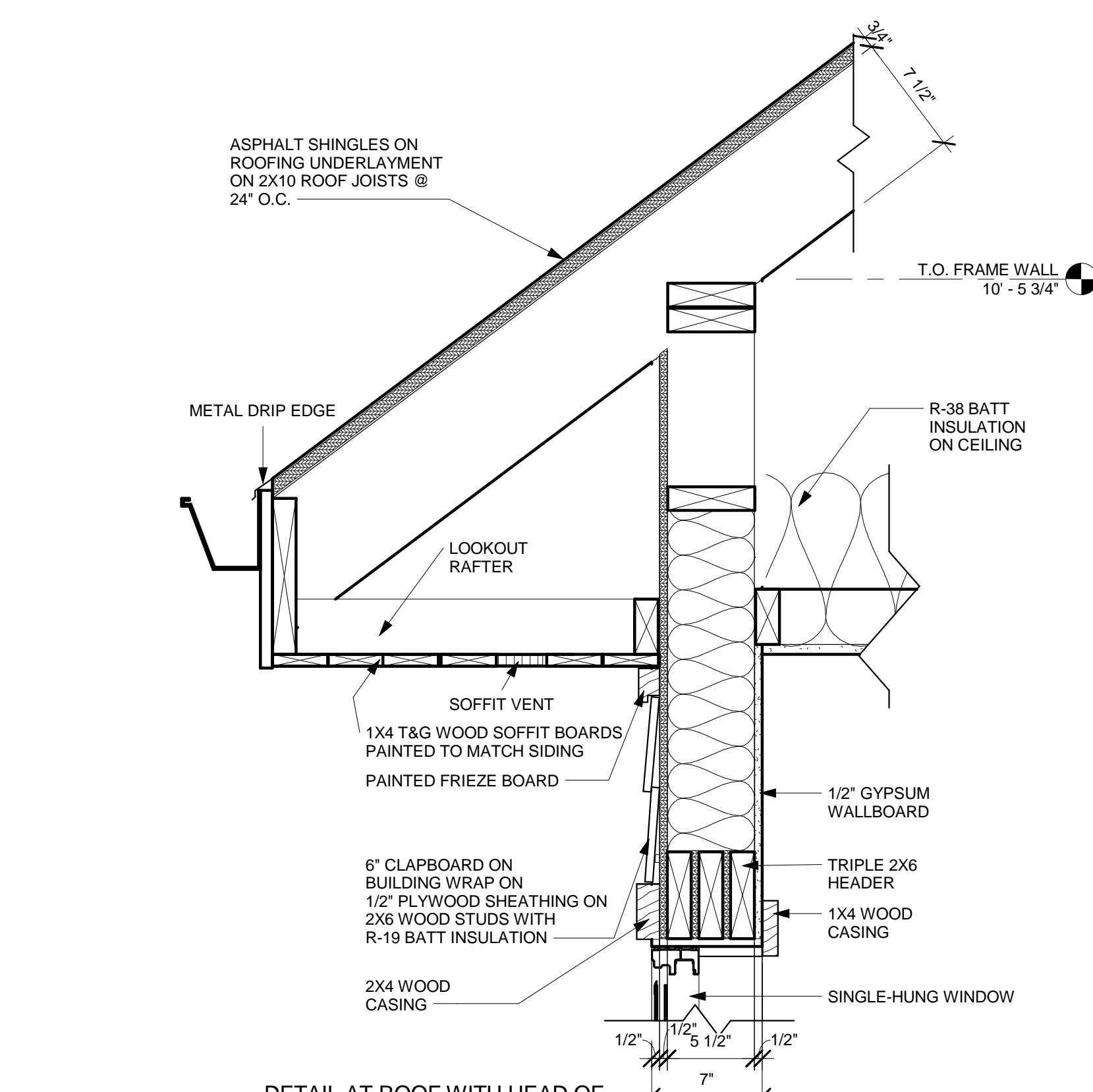
- A-1.0 FLOOR PLANS, ELEVATIONS, AND BUILDING SECTIONS
- A-2.0 WALL SECTIONS, DETAILS, AND INTERIOR ELEVATIONS

CAIRO RESIDENCE

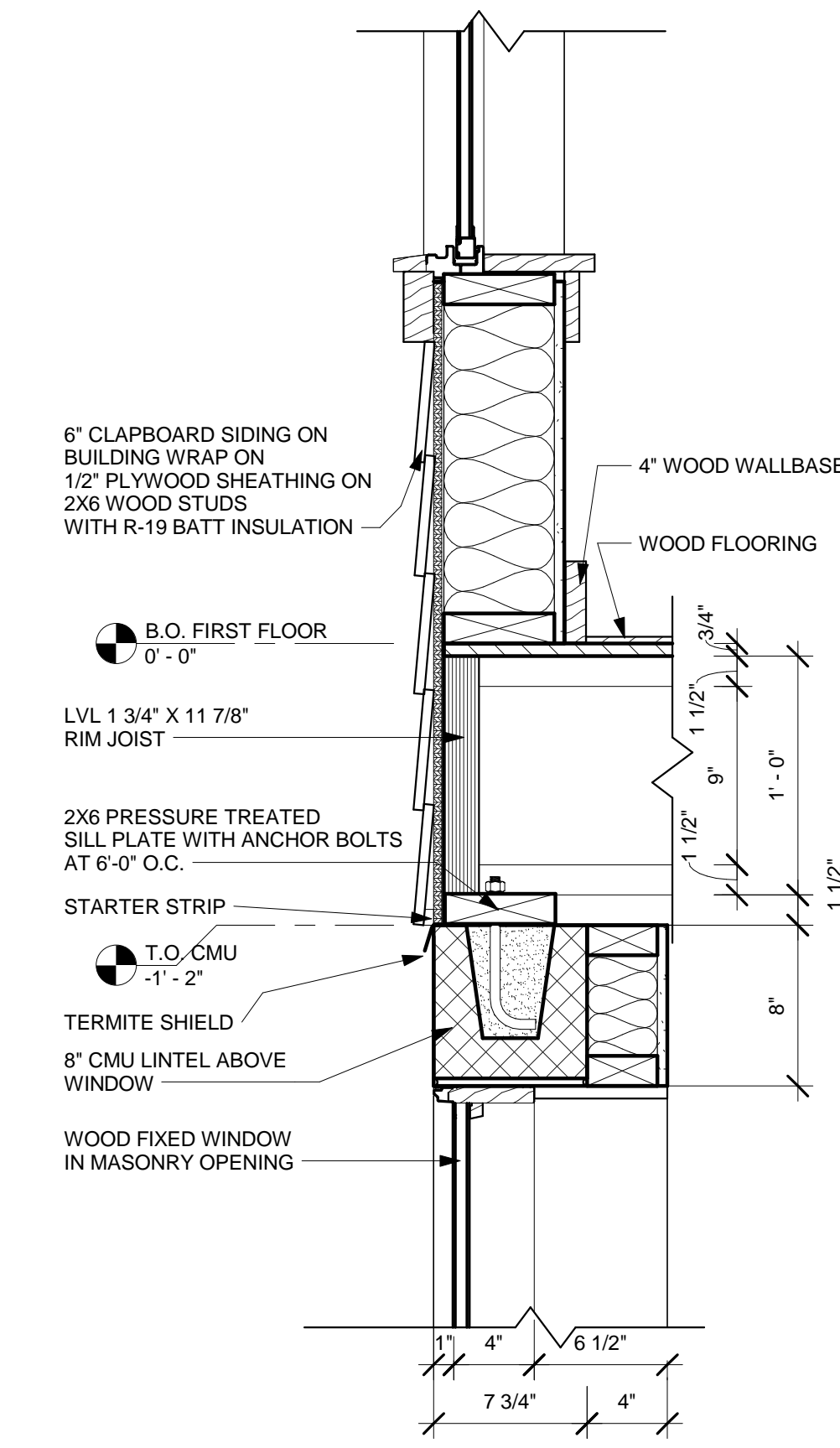


1 KITCHEN ELEVATION 1
1/2" = 1'-0"

2 KITCHEN ELEVATION 2
1/2" = 1'-0"



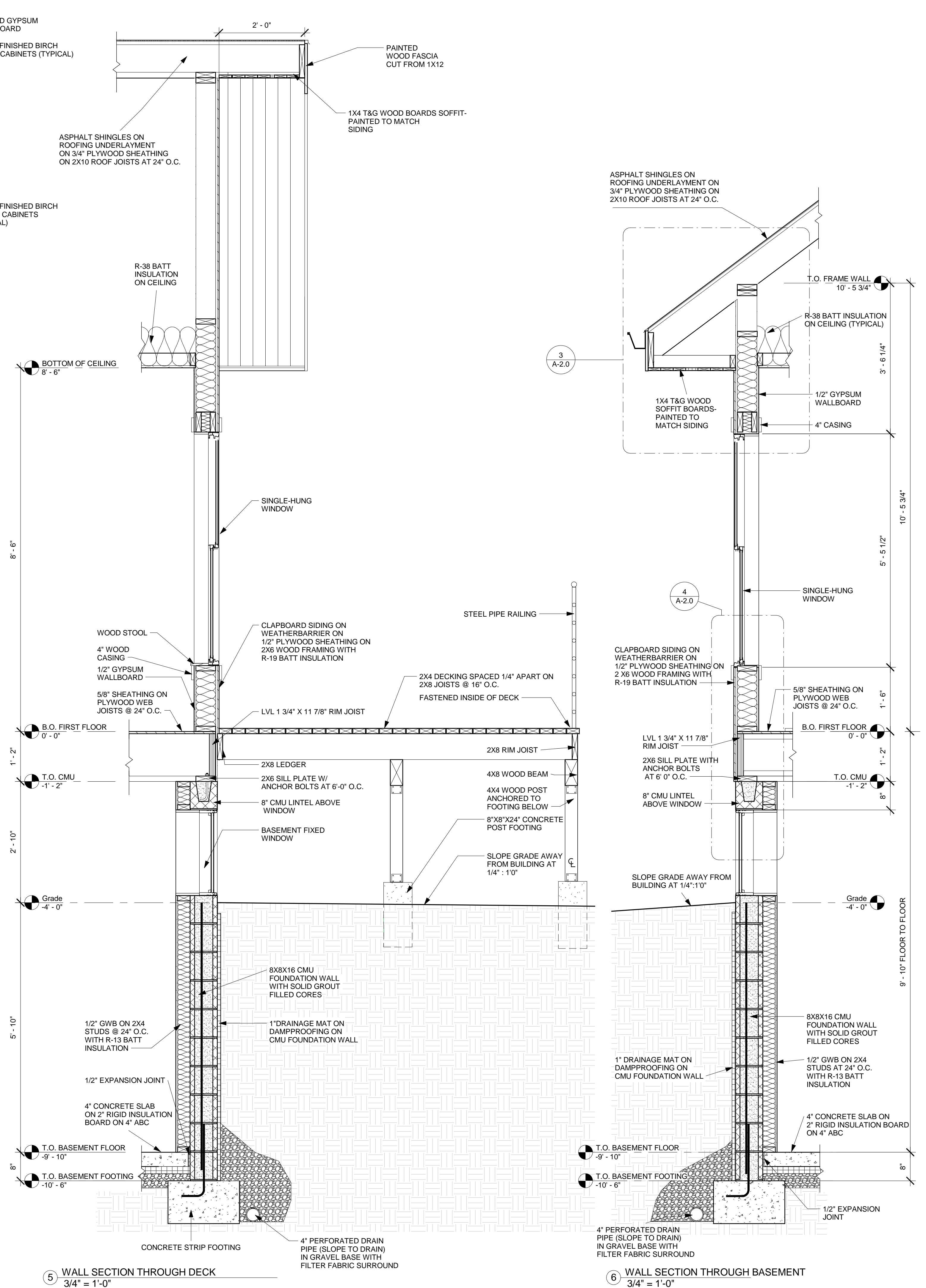
3 DETAIL AT ROOF WITH HEAD OF WINDOW
1 1/2" = 1'-0"



4 DETAIL AT FIRST FLOOR
1 1/2" = 1'-0"

ROOM SCHEDULE											
NUMBER	NAME	AREA	NE	NW	SE	SW	FLOOR FINISH	BASE FINISH	CEILING FINISH	COMMENTS	
001	STORAGE	368 SF	PT-4	PT-4	PT-4	PT-4	CT-1	CT-2	PT-4	-	
002	UTILITY	103 SF	PT-4	PT-4	PT-4	PT-4	CT-1	CT-2	PT-4	-	
101	LIVING/DINING ROOM	246 SF	PT-3	PT-3	PT-3	PT-3	WF-1	WT-1	PT-3	-	
101A	CLOSET	11 SF	PT-3	PT-3	PT-3	PT-3	WF-1	WT-1	PT-3	-	
102	KITCHEN	131 SF	PT-3	-	PT-3	PT-3	WF-1	WT-1	PT-3	-	
103	HALLWAY	98 SF	-	PT-3	PT-3	PT-3	WF-1	WT-1	PT-3	-	
104	SECONDARY BEDROOM	132 SF	PT-5	PT-5	PT-5	PT-5	CPT-1	WT-1	PT-5	-	
104A	CLOSET	22 SF	PT-5	PT-5	PT-5	PT-5	CPT-1	WT-1	PT-5	-	
105	BATHROOM	64 SF	PT-2	PT-2	PT-2	PT-2	CTILE-1	WT-1	PT-2	-	
106	MASTER BEDROOM	195 SF	PT-1	PT-1	PT-1	PT-1	CPT-1	WT-1	PT-1	-	
106A	CLOSET	24 SF	PT-1	PT-1	PT-1	PT-1	CPT-1	WT-1	PT-1	-	
Grand total: 11		1395 SF									

WALLS AND CEILINGS			FLOORS			MILLWORK/BASE CONDITIONS		
PT-1:	PRODUCT: OLYMPIC MANUFACTURER: GLACIER PEARL COLOR: SATIN SHEEN:	INTERIOR PAINT	CT-1:	PRODUCT: CONCRETE QUIKRETE MODEL #:	CONCRETE	WT-1:	PRODUCT: WOOD TRIM TECSUN BAMBOO BOW-T TYPE: MODEL #:	WOOD TRIM
PT-2:	PRODUCT: OLYMPIC MANUFACTURER: NOCTURNE SHADE COLOR: SATIN SHEEN:	INTERIOR PAINT	WF-1:	PRODUCT: HARDWOOD USFLOORS TYPE: MODEL #:	HARDWOOD	CT-2:	PRODUCT: CONCRETE TRIM QUIKRETE MODEL #:	CONCRETE TRIM
PT-3:	PRODUCT: OLYMPIC MANUFACTURER: GYPSUM COLOR: SATIN SHEEN:	INTERIOR PAINT	CPT-1:	PRODUCT: INDOOR CARPET SHAW FLOORS COLOR: INTUITION MODEL #:	INDOOR CARPET			
PT-4:	PRODUCT: OLYMPIC MANUFACTURER: CHAMBRAY COLOR: SATIN SHEEN:	INTERIOR PAINT	CTILE-1:	PRODUCT: CERAMIC TILE INTERCERAMIC COLOR: SILVER MODEL #:	CERAMIC TILE			
PT-5:	PRODUCT: OLYMPIC MANUFACTURER: INDIAN MAIZE COLOR: SATIN SHEEN:	INTERIOR PAINT						



5 WALL SECTION THROUGH DECK
3/4" = 1'-0"

6 WALL SECTION THROUGH BASEMENT
3/4" = 1'-0"